

**Barton
& Loguidice**

**Huntingdon County
Municipal Solid Waste Management Plan**

July 21, 2021

Purpose of Meeting

- Discuss status of the plan and path forward



Purpose of Municipal Solid Waste Management Plan

- Requirement of PADEP to update Plan every 10 years
- Assure disposal capacity for county generated municipal waste for 10 years
- Address the State's recycling goal of 35%
- Review current municipal waste and recycling management systems
- Develop implementable action items for the 10 year planning period



Status

- Prepared draft Plan
- Conducted 3 SWAC Meetings in each County
- Prepared a Solicitation of Interest to identify disposal facilities
 - Received responses
 - Met with several haulers and facilities
- Revised tonnages
- Presented draft plan to SCCSWA

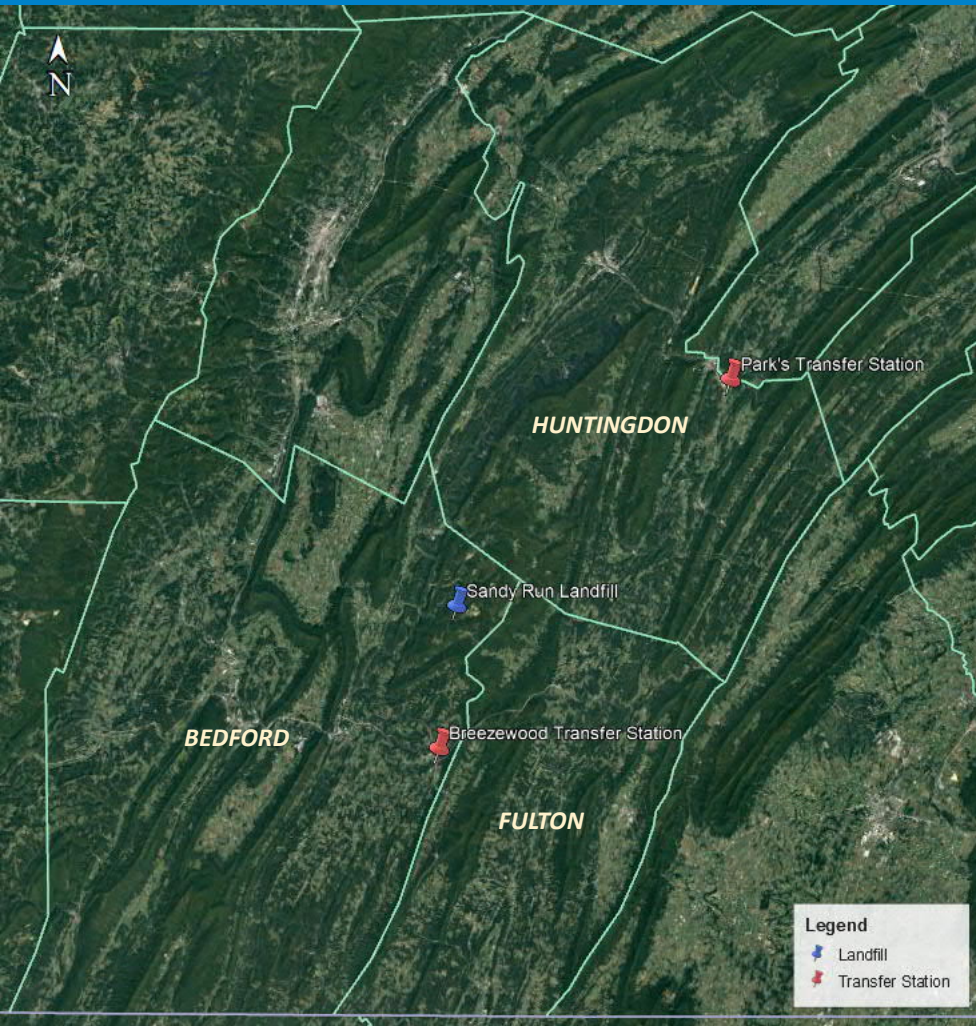
PA DEP Reported Waste and Recyclables

HISTORICAL WASTE TONNAGES				
Material	2019			
	Bedford	Fulton	Huntington	SCCSWA Region
Residential, Commercial, and Institutional Waste*	46,964	2,048	36,061	85,073
Recyclables and Organics (diverted)**	9,222	13,073	4,283	26,578
Total Tons	56,186	15,121	40,344	111,651
Population	48,665	14,533	45,489	108,687
Disposal Rate (Tons/Capita/Year)	0.96	0.14	0.79	0.78
Recycling Rate (Tons/Capita/Year)	0.18	0.90	0.09	0.24

National Per Capita Generation Rates
 Typical MSW 0.53 tons/capita/year
 Recyclables 0.27 tons/capita/year

* Tonnages were obtained from PADEP Waste Destination Report
 ** Tonnages obtained from PADEP Re-TRAC Reports

Local Facilities



Waste Disposal Facilities in SCCSWA Region:

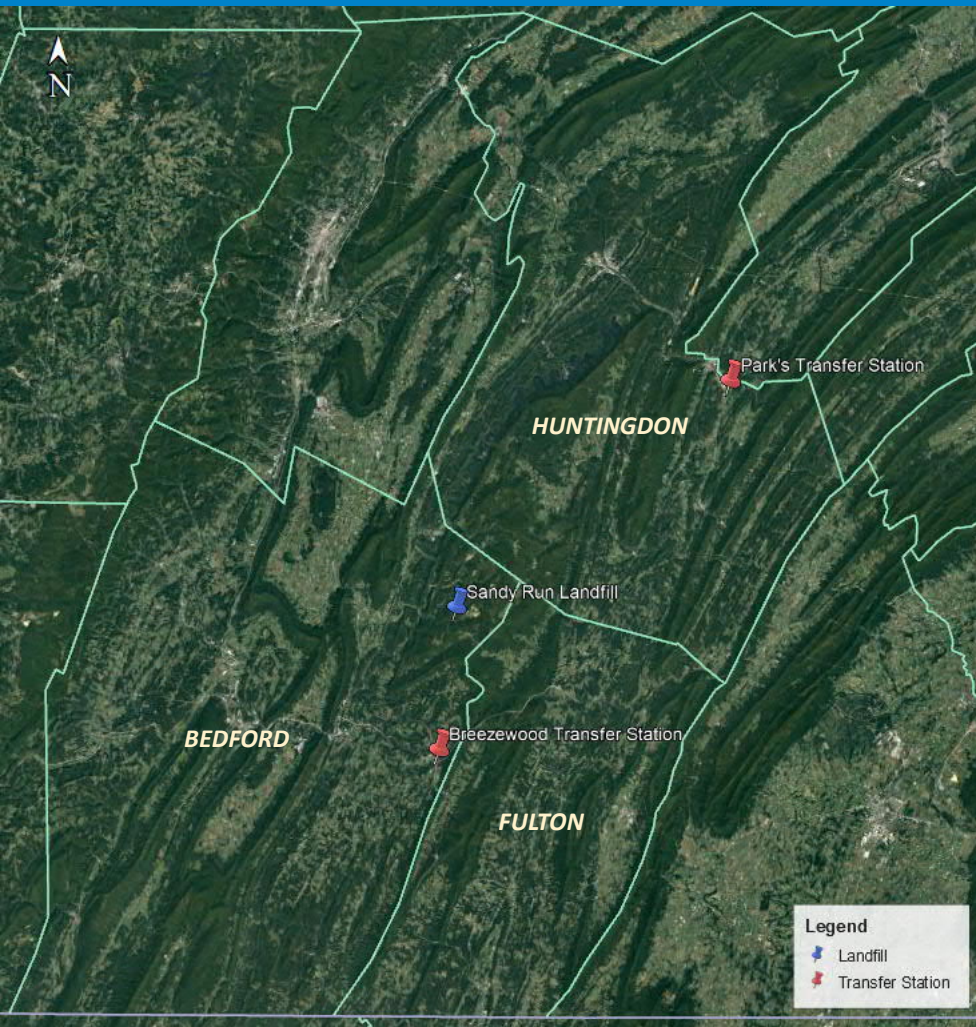
Sandy Run Landfill
995 Landfill Road
Hopewell, PA 16650
(Bedford County)

Transfer Stations in SCCSWA Region:

Breezewood Transfer Station
820 S Breezewood Road
Breezewood, PA 15533
(Bedford County)

Park's Transfer Station
11763 Shirley Ayr Road
Mt. Union, PA 17066
(Huntingdon County)

Local Facilities



- Nearly all waste from Fulton County goes to transfer stations in Bedford or Huntington County
- As a result, the amount of waste reported as 'disposed from Fulton County' is significantly under-reported

Adjusted Tonnages

HISTORICAL WASTE TONNAGES				
Source	2019			
	Breezewood Transfer Station		Park's Transfer Station	
	Tons	% of Total	Tons	% of Total
Bedford County	27,000	73%	330	1%
Fulton County	3,700	10%	1531	5%
Huntington County	200	1%	23,462	75%
Adams County	-	-	47.4	0%
Blair County	5,000	14%	219	1%
Somerset County	10	0%	-	-
Cambria County	40	0%	-	-
Franklin County	550	1%	3,040	10%
Juniata County	-	-	444	1%
Mifflin County	-	-	2,243	7%
Other PA Counties	3	0%	24	0%
From MD and WV	500	1%	2	0%
Total	37,003	100%	31,342	100%

About 82% of the waste transferred is generated within the three County Region

Adjusted Waste and Recyclables

HISTORICAL WASTE TONNAGES				
Material	2019			
	Bedford	Fulton	Huntington	SCCSWA Region
Residential, Commercial, and Institutional Waste*	46,964	2,048	36,061	85,073
Generation Rate (Tons/Person)	0.96	0.14	0.79	0.78
Adjusted Residential, Commercial, and Institutional Waste	34,215	9,113	29,623	72,951
Adjusted Generation Rate (Tons/Person)	0.70	0.63	0.65	0.67

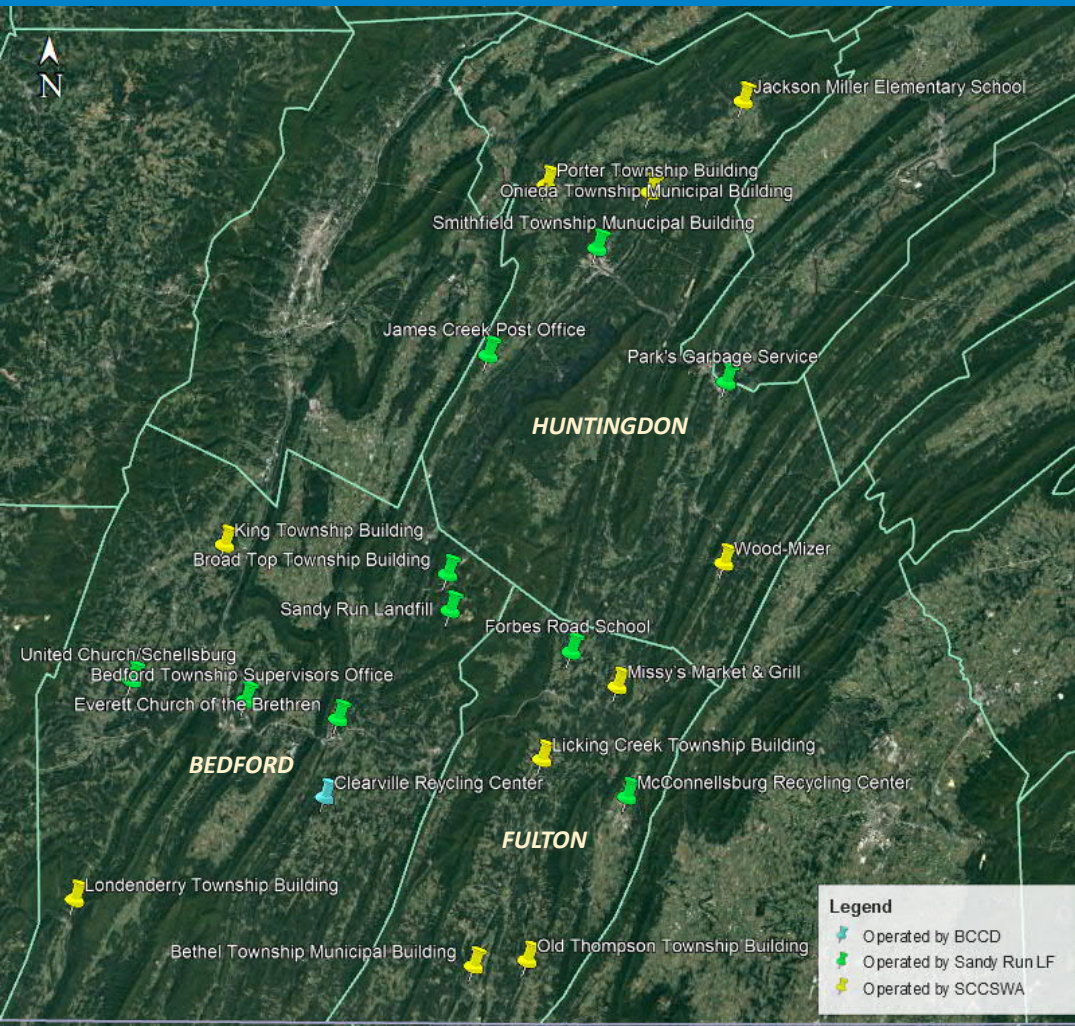
Recycling Discussion with SCCSWA

- SCCSWA Budget
- Recycling Centers
- Global Perspective on Recycling
- Cost and Funding

SCCSWA Budget

	2018	2019	2020 est.
Beginning Balance			
Revenue	\$132,756	\$41,097	\$19,513
Expenses	\$79,419	\$131,044	\$78,683
Difference	\$53,336	-\$89,947	-\$59,169

Twenty-one Recycling Drop-Offs in SCCSWA area



- Ten operated by Advanced Disposal, Sandy Run Landfill as part of permit conditions
- Ten operated by Parks Disposal under contract to SCCSWA
- One operated by Bedford Conservation District

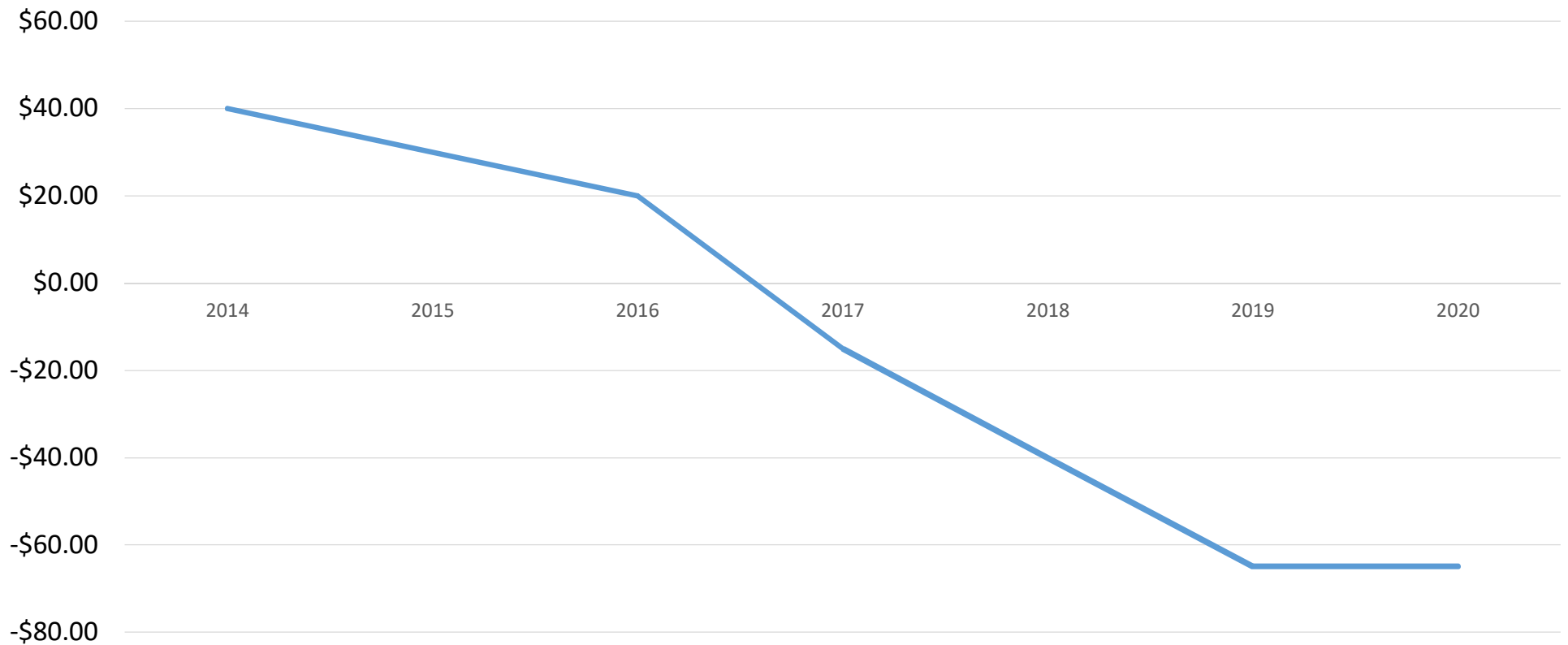
Global Perspective on Recycling



- Policies and restrictions that China and other Asian countries have placed on the import of recyclables has impacted recycling throughout the world, in the U.S., and SCCSWA
 - Regulations and requirements (0.5% contamination)
 - Impact on the value of recyclables

Local Cost of Processing has Increased

Revenue (or Fee)/Ton for Recyclables delivered to Hagerstown, MD MRF



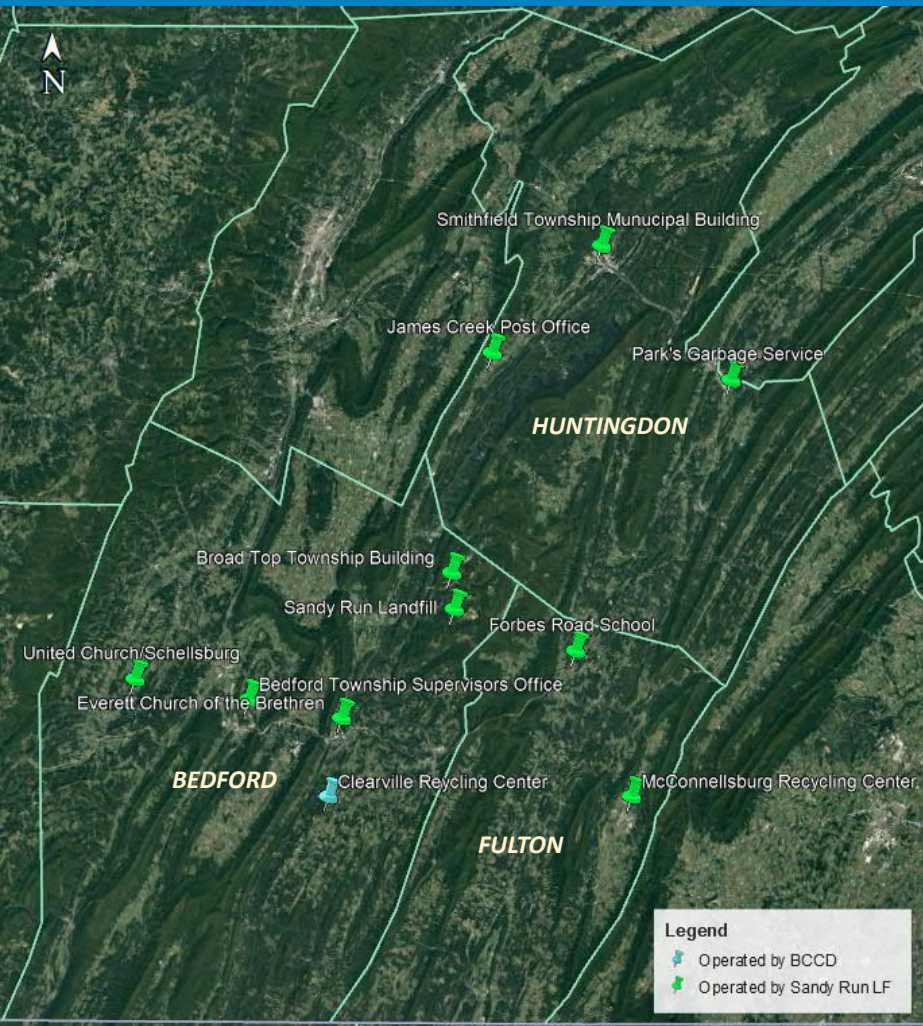
Cost of SCCSWA Contractor - 2020 estimate

Drop-Off Location	Estimated 2020 Tonnage	Hauling Fee per Pull	Total Fee 2020 est.
Porter Township Building	89	\$170	\$19,934
Jackson Miller Elementary School	52	\$200	\$13,517
Oneida Township Municipal Building	51	\$50	\$3,762
Bethel Township Municipal Building	35	\$225	\$10,251
King Township Building	33	\$325	\$13,982
Wood-Mizer	32	\$50	\$2,317
Missy's Market & Grill	26	\$125	\$4,384
Londenderry Township Building	19	\$400	\$9,789
Old Thompson Township Building	14	\$225	\$4,194
Licking Creek Township Building	13	\$150	\$2,680
Total			\$84,809

Options to Fund Recycling and Reduce Cost

- Close all SCCSWA recycling centers
- Reduce number of SCCSWA recycling centers
- [REDACTED]
- Implement a recycling user fee
- Municipalities provide funding for local recycling centers operations
- Fund from Counties' general fund

Close all SCCSWA Drop-off Sites

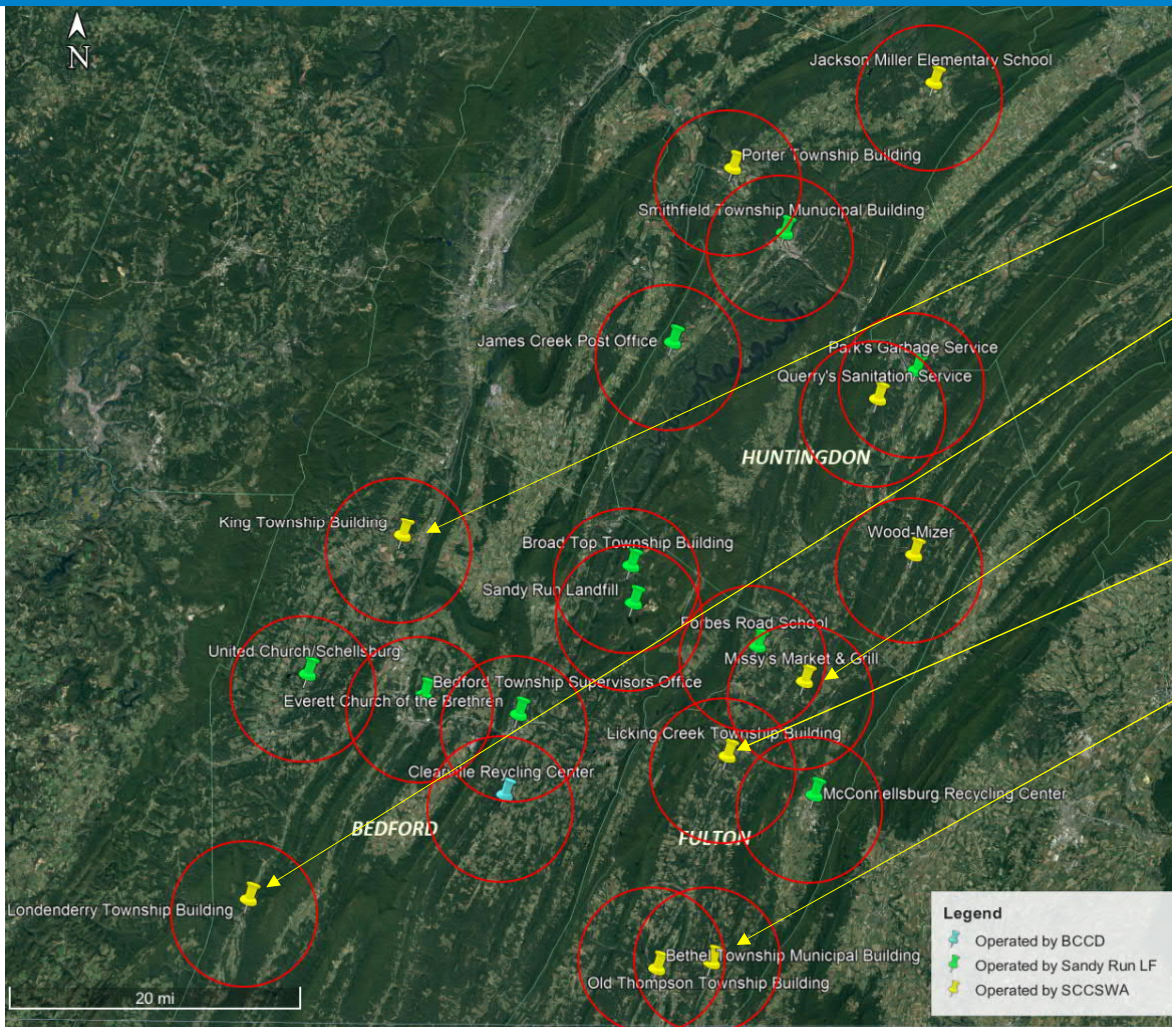


Closing all SCCSWA drop-off sites will save about \$85,000/year

Optimize Recycling Drop-off Centers

Evaluation Factor	Five lowest scoring centers
Lowest 2020 Tonnages to Date	<ol style="list-style-type: none"> 1. Sandy Run LF (3.11 tons) 2. Licking Creek Township Building (7.61 tons) 3. Forbes Road School (9.11 tons) 4. Old Thompson Township Building (10.79 tons) 5. Broad Top Township Building (12.89 tons)
Lowest population within Zip Code	<ol style="list-style-type: none"> 1. Broad Top Township Building (200) 2. Forbes Road School (462) 3. Old Thompson Township Building (702) 4. Wood-Mizer (1,125) 5. Licking Creek Township Building (1,220)
Longest Distance to collect	<ol style="list-style-type: none"> 1. Londonderry Township Building (76.3 miles) 2. United Church/Schellsburg (70.3 miles) 3. King Township Building (62.8 miles) 4. Bethel Township Municipal Building (56.3 miles) 5. Bedford Township Supervisors Office (55.3 miles)
Centers within 5-Mile Radius of Another Center	<ol style="list-style-type: none"> 1. Broad Top Township Building & Sandy Run LF 2. Forbes Road School & Missy's Market & Grill 3. Old Thompson Township Building & Bethel Township Municipal Building 4. Smithfield Township & Porter Township Building 5. Smithfield Township & Oneida Township Building

Consider Closing the following SCCSWA sites



King Township (\$14,000)

Londonderry Township (\$9,800)

Missy's Market & Grill (\$4,500)

Licking Creek Township Building (\$2,500)

Bethel Township Municipal Building

Implement a Recycling User Fee

- Charge users of the recycling system a fee for usage
 - Prepaid tag system for users – honor system
 - Implement a key card system
 - Fence and gate all sites
 - Users purchase an electronic passcard to use the facility

Municipalities fund Local Recycling Centers

- Municipalities where recycling centers are located are charged for the service
- Fee is based on actual costs incurred by SCCSWA

Fund from County General Fund

- Counties transfer funds to operate recycling centers to SCCSWA
- Counties fund from existing sources, establish a new fee, or increase taxes

Conclusions

- SCCSWA has been operating at a deficit over the last few years (-\$75,000 per year)
- The value of recyclables has plummeted in the last 5 years
- The current contractor is operating under a year-to-year contract and is reportedly losing money
- Several of the SCCSWA recycling centers are inefficient (low tonnages, long haul distance, limited population, or near other facilities)
- There are limited funding options available
- SCCSWA chose to close the recycling centers they funded

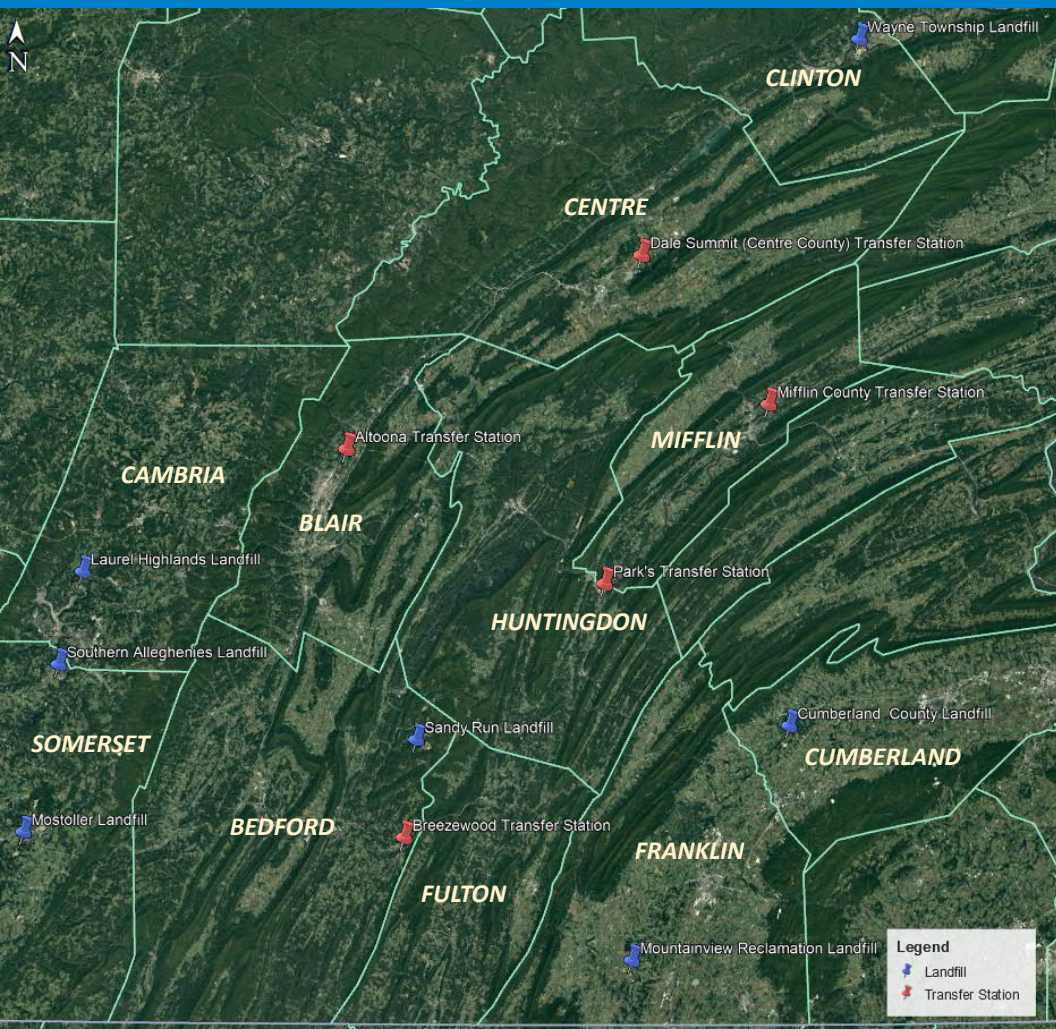
Modifications to the draft Plan

- Procedure for Developing Solid Waste Management Plan Revisions
Substantial and Non-Substantial Revisions
 - A substantial revision process must always be used when the county proposes to eliminate a recycling program that was included in the current plan and is operating in the county. (25 Pa. Code § 272.252(e)(1)). This action would probably reduce the amount of recycling in the county, and is a very serious consideration.

Path Forward

- Revise plan and follow-up with private facilities
- When the plan revision is complete, the county publishes a notice in a newspaper of general circulation in the county and submits copies to PA DEP; Municipalities; county planning agencies; county Health Department.
- The County will receive comments for 90 days from the date of the newspaper notice, and conduct a public hearing during the 90-day comment period.
- Make appropriate revisions and prepare a written response to the comments.
- Submits the plan revision to the County Commissioners for adoption.
- The Commissioners adopt the plan within 60 days after the public comment period.
- The Commissioners send the adopted plan to the municipalities within 10 days after it is adopted.
- In the process of ratification, each municipality within the county has 90 days to act on the plan.
- When more than one-half of the municipalities ratify the plan, the county submits a copy of the plan to the Department for approval.

Regional Facilities



Regional Waste Disposal Facilities:

Cumberland County Landfill
Laurel Highlands Landfill
Mostoller Landfill
Mountainview Reclamation Landfill
Sandy Run Landfill
Southern Alleghenies Landfill
Wayne Township Landfill

Regional Transfer Stations:

Altoona Transfer Station
Breezewood Transfer Station
Dale Summit Transfer Station
Mifflin County Transfer Station
Park's Transfer Station

- The transfer stations in Bedford and Huntingdon also accept waste from Blair, Franklin, Somerset, Cambria Counties, Maryland and West Virginia
- In addition, individual haulers operate across County lines. As a result, when haulers report where the waste was collected, they only respond with one County

The experience to
listen
The power to
solveSM

BartonandLoguidice.com

